

## Z9801P

Dominator Peak Pro with PICV & Strainer Drain

## Z9801PF

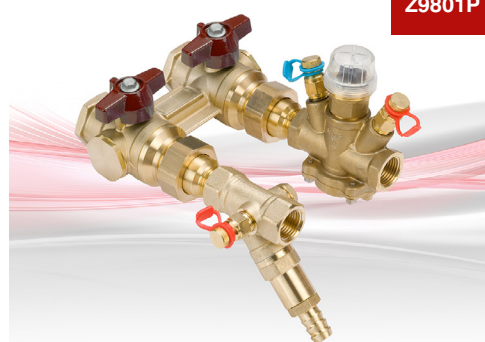
Dominator Peak Pro with PICV,  
Strainer Drain and FMD

PN16

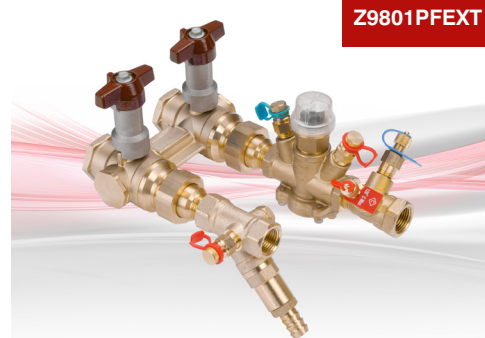
### Features & Benefits

**ProBalance**

- Compact, pre-fabricated unit – now available with Peak Pro PICV with a wide range of settable flows to suit all applications
- All valves are subject to both a pressure test, in accordance with BS EN 12266-1, as well as a flow limitation test, in accordance to BSRIA BTS1. This provides reassurance of performance and accuracy within each valve
- Provides accurate flow rates & differential pressure control as well as flow measurement (Z9801PF), system flushing and isolation
- DZR H Body tested to 3.1X Design Working Pressure (DWP) during development for design robustness and tested to EN12516-2 to comply with the Pressure Equipment Directive (PED)
- Fully assembled & factory tested unit reduces installation time, costs and specification risks
- Available with and without extension stems to suit customer specification
- Available in 400kPa & 800kPa rated variants
- On-Off, modulating or feedback actuators are available separately to match specification



Z9801P



Z9801PFEXT

### Materials

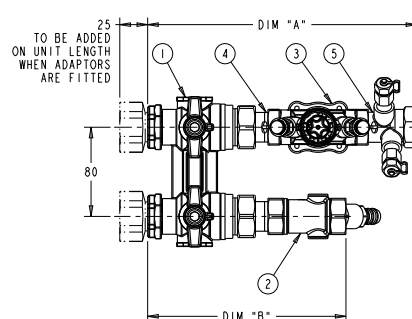
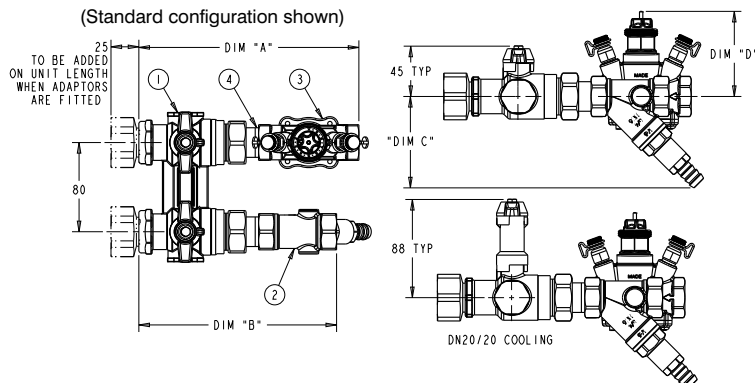
NO.	PART	MATERIAL	SPECIFICATION
1	Bypass H-Body	DZR Brass	BS EN 12165 (CW602N)
2	D299P Strainer Drain	DZR Brass	BS EN 12165 (CW602N)
3	D995 PICV	DZR Brass	BS EN 12165 (CW602N)
4	Tailpiece	DZR Brass	BS EN 12164 (CW602N)
5	D901/ D902 FMD	DZR Brass	BS EN 12164 (CW602N)

### Dimensions & Weights

SIZE (DN)	A (mm)	B (mm)	C (mm)	D (mm)	VALVE WEIGHT (kg)
Z9801P 15/15	160	148	76	67	2.15
Z9801P 20/15	184	173	76	67	2.54
Z9801P 20/20	197	178	82	77	2.91
Z9801P 25/20	197	178	82	77	2.91
Z9801P 25/25	248	224	89	77	4.22
Z9801PF 15/15	204	148	76	67	2.35
Z9801PF 20/15	229	173	76	67	2.75
Z9801PF 20/20	241	178	82	77	3.21
Z9801PF 25/20	261	198	82	77	3.51
Z9801PF 25/25	298	224	89	77	4.55

### Dimensional Drawings

(Standard configuration shown)



**PRESSURE RATING:** PN16

**TEMPERATURE RATING:** -10 to 100°C

**END CONNECTIONS:**

Flushing By-pass body - BSP Taper,  
Strainers & Tailpieces - BSP Taper

**SPECIFICATION** DZR Brass (BS EN 12165) fan-coil valve/ terminal unit valve assembly. Preassembled to the requirements of each individual terminal unit to include a flushing by-pass with integral isolation valves, Peak Pro Pressure Independent Control Valve (PICV), with options for low flow to high flow, flow measurement device, strainer, drain and pressure test points as and where specified. Extended handles will be fitted for Chilled Water applications. On-Off or modulating actuator is required to control the PICV. Valve assembly will be labelled to include the terminal unit reference number and flow rate. Generally as Crane FS Z9801P & Z9801PF Dominator Peak Pro system with PICV.

Every effort has been made to ensure that the information contained in this publication is accurate at the time of publishing. Crane Ltd assumes no responsibility or liability for typographical errors or omissions or for any misinterpretation of the information within the publication and reserves the right to change without notice.

Valid as of 250920

TECHNICAL HELPLINE: +44 (0)1473 277400

E: enquiries@cranefs.com W: www.cranefs.com

Middle East & North Africa Office: +971 4816 5800

CRANE

FLUID SYSTEMS

1